

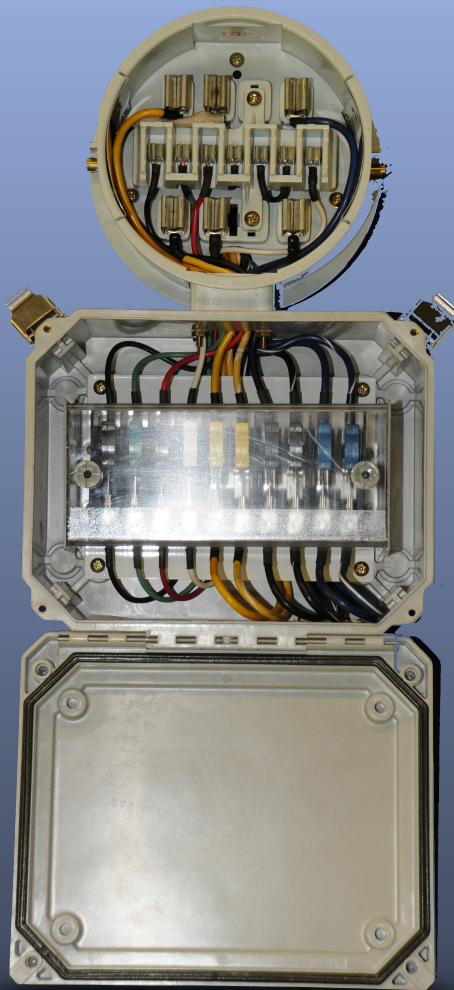
MARWELL CORPORATION

Manufacturer of UL Listed Meter Socket Adapters

WWW.MARWELLCORP.COM

PO BOX 139 MENTONE CA 92359

(909) 794-4192 FAX (909) 794-0250



SPECIAL ADAPTERS

Auto By-Pass Conversion Adapter

The Marwell PTS will Convert an Auto By-Pass Socket to a Test Switch Socket in minutes.

Automatic By-Pass sockets will short the CT's when the meter is removed. No test switch required. This sounds good if nothing goes wrong and no field testing is required. However the new open access rules may make it necessary to upgrade these services from auto-bypass to manual bypass by changing the socket and installing a test switch. This is costly and requires a full service shut-down.

The Marwell PTS (Packaged Test Switch) adapter will place a test switch into the circuit for as long as you need it there, from minutes to years. The test switch enclosure is fully lockable and sealable. The weatherproof enclosure is NEMA rated for outdoor application.

Specifications

Modified version of the **UL Listed** 1000-0-R13 States/AVO MTS Series test switch. Fiberglass enclosure

The standard package contains a MTS model test switch by States/ A VO, a miniature model that can be probed with standard test lead sets.

Ordering Instructions

Model **PTS-13-MTS**

MTS Series Test Switch by AVO

Top mounted switch box optional

The test switch may be configured to utility specifications. Consult Marwell for details.



Consult Factory for Pricing and Availability.